



**Engineering Defense Facility Technology through
Industry, Academia, and Government Collaboration.**

Cultivating New Military Engineers for the Future.



一般社団法人 防衛施設学会

**Japan Society of
Defense Facility Engineers**

The Role of Japan Society of Defense Facility Engineers

The Japan Self Defense Forces and the United States Forces operate various facilities (i.e. airfields, port facilities, maneuvering area, etc.) in Japan, which support the undertakings necessary to secure the National Security of Japan.

National Security and Facility Engineering is a comprehensive field which consists of technological applications not limited to construction, architecture, various engineering branches, natural sciences, and military engineering.

The Japan Society of Defense Facility Engineers (JSDFE) is the only non-profit association in Japan who is dedicated to fields related to National Security and Facility Engineering Technology.

Mission

We aim to promote research and survey technology related to national security and facility engineering to build a sustainable foundation which will advance professional development and academia in the field.

History

National Security and Facility Engineering is a comprehensive field which consists of technological applications not limited to construction, architecture, various engineering branches, natural sciences, and military engineering.

The Japan Society of Defense Facility Engineers is the only non-profit association in Japan who is dedicated to fields related to National Security and Facility Engineering Technology. Similarly in the United States of America, there is an association by the name of the Society of American Military Engineers (SAME) (est. 1920), which shares a similar mission.

Our approach towards the research and surveying of National Security and Facility Engineering Technology is dynamic, avoids constituting a specific concept from a single field, and integrates Risk Management approaches. In recent years the changes in our global society and circumstances have raised the demand and expectations toward technology related to National Security and Facility Engineering. This change has made the field a vital part in the development and advancement of technology for the future.

In 1962, under the name “National Security and Facility Engineering Technology Research Group”, engineers and researchers from various government sections were assembled. They gathered with hope of establishing a society which would advance technology related to National Security and Facility Engineering. Since then, it has played an active role in disseminating the mission by establishing 7 domestic district offices, assembling members totaling now over 700, facilitating and providing research forums, symposiums, exhibitions, and publications for over 40 years.

In April 2004, to further extend the reach of its programs, the association re-established itself as the “Japan Society of Defense Facility Engineers”.

Furthermore, in March 2016, the association’s non-profit organizational status was successfully changed to a “General Incorporated Foundation”, so those programs could be strengthened.

The JSDFE aims to continuously work not only alongside stakeholders in the government and public sectors, but with also those engineers and researchers in the private business sector in related fields, to widen the scope and increase the activeness of its programs.

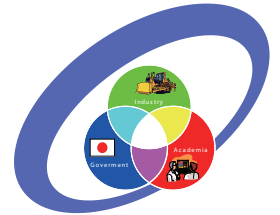
Core Programs

- Implement promotional, surveying, and research activities.
- Launch research symposiums, lecture forums and field tours.
- Publish newsletters, special interest articles and other publications.
- Advocate awareness and understanding toward defense facility related technology.
- Commission or aid development of defense facility technology.
- Support activities which align with the society's aims.



Facilitate collaboration between members of the Industry, Academia, and Government

- Improvement of technology and the cultivation of engineers and researchers related to defense facility engineering.
- Advocate research related to the defense facility engineering.



International Exchange Program

Partnership with the Society of American Military Engineers (SAME)

- Established in 1920, SAME shares a similar mission and common values with the JSDFE.
- Through a collaborative efforts with SAME, the JSDFE succeeded in offering interactions amongst members of the Japan and US private industry level at events such as the Annual forum, Military Engineer Techno Fair, joint field tours.



JSDFE/SAME Joint Meeting



Executive personnel of JSDFE and SAME

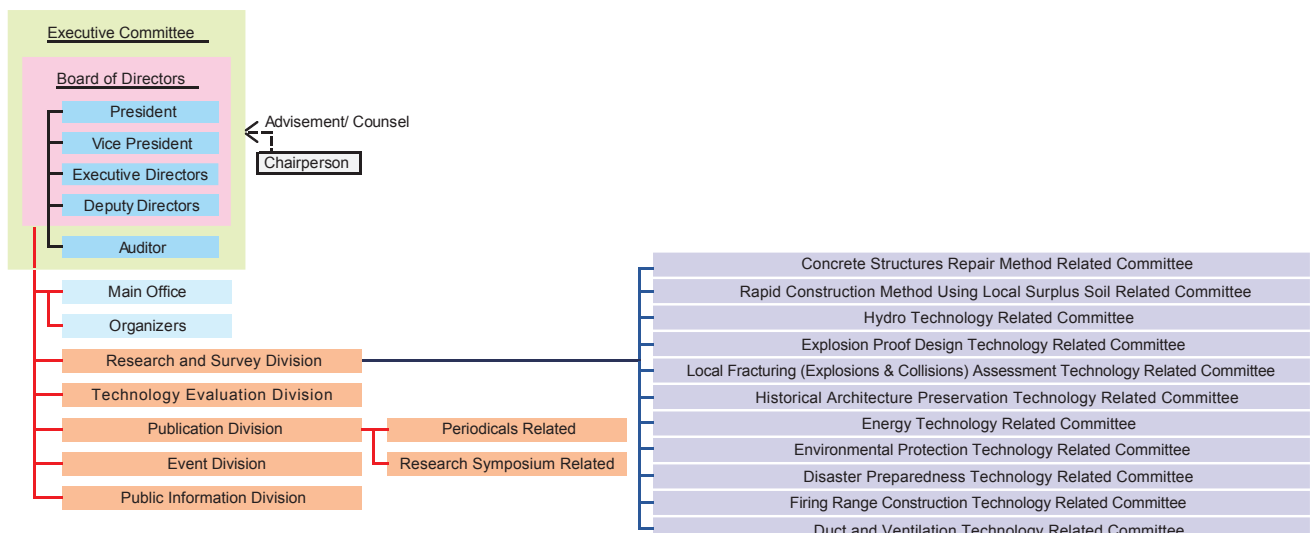


SAME booth at METF



JSDFE Presentation on SAME's Okinawa Symposium by President Ohno

Organization Chart



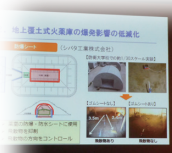
- Remarks)
- 1 The direction and policies of the JSDFE are decided at the General Members Meeting.
 - 2 The Auditor is a member of the Executive Committee, but not the Board of Directors.
 - 3 Organizers assist the Board of Directors by executing and implementing their decisions.

Events



Military Engineer Techno Fair (METF: Annual - Summer)

- Exhibition of technology or their applications for defense facility engineering.
- Sep. 6, 2017: 24 booths, approximately 500 attendees.
 - Special Lecture “21st Century Japan’s Waymarks – From the side of the National Security”
Mr. Takashi Uto, Member of the House of Council



Technical presentations



Exhibition booths



Mr. Takashi Uto, Member of the House of Councilors

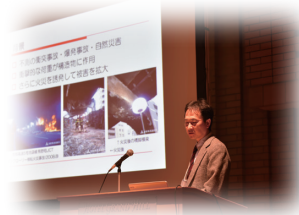


Research Symposium (Annual Forum: Annual - Winter)

- Presentation of academic research related to defense facility engineering.
- Feb. 7, 2018: Approximately 550 participants attended.
 - Special Lecture “Security Environment Issue around Japan”
Senior Advisor to the Minister of Defense, Mr. Masanori Nishi



Research symposium



Special lecture by Mr. Masanori Nishi

Field Tour (Twice a year)

- JSDFE provides members an opportunity to tour various defense facility engineering related sites, which include but not limited to, JSDF and USFJ bases and large-scale construction sites.



MLIT Yanba Dam Project



JMSDF Yokosuka Naval Base



MLIT Underwater Tunnel Project
(Photo by Mitsui E&S Co. Ltd. Chiba Works)



USAF Kadena Air Base

JSDFE Annual Publication "MIRAI" (Once a Year)

MIRAI = Military - Industry - Research & Development Activities partnerships and International Network

- JSDFE "MIRAI" is registered to the JST Database based on a request of the Japan Science & Technology Agency (JST).
- MIRAI 20th, Special Feature - Extension of life cycles of the infrastructure of JSDF Facilities.
Special Reports - Introduction to Corps of Engineers of JGSDF, Dr. Asami Jyohoji and the Air-Raid Shelter in the Imperial Palace, and more.



MIRAI-Annex – “New Technology for Defense Facility Engineers” (Once a Year)



Vol. 7(Dec. 2015)

- Facility Defense
 - Facility Functional Improvement
 - Facility Management
- Introduction of new technology from those areas noted above

Defense



Precast concrete underground ammunition storage



Border security Laser ribbon

Functional Improvement



Column-less construction method

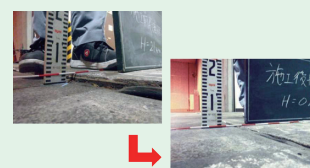


Self-contained water treatment facility-underwater treatment system

Management



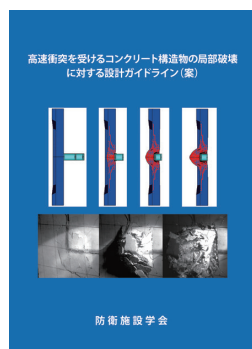
Temporary emergency panel bridge



Rapid repair method for repairing floors

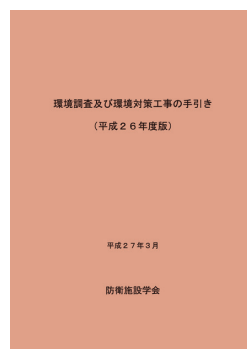
Reports of the Research Division: Special Interest Committee Reports

➤ Local Fracturing (Explosions & Collisions) Assessment Technology Related Committee



April 2014
“Design guidelines on to the local failure of concrete structures in response to high-speed collision (Draft)”.

➤ Environmental Protection Technology Related Committee



March 2015
“Guide for environmental surveying and measurements”



Membership Information

The JSDFE consists of Individual and Group (e.g. Company/Business Entity/Organization) Memberships.

We continually strive to disseminate our mission to others and support programs by holding activities to recruit new members.

Individual members range and are not limited to those in the fields of construction, architecture, and various engineering branches, environmental and military technology, specialized academia or research groups, and companies and organizations who develop technology related to these areas.

The organization's programs are made possible through the dues and donations collected from members. These include an annual due of ¥4,000 for Individual Members and of ¥50,000 for Group Members.



Japan Society of Defense Facility Engineers: JSDFE

Mailing Address **Ohi-BLDG 2F, 14-5, Yotsuya-Honjio-Cho, Shinjuku-Ku,
Tokyo, Postal code 160-0003, Japan**

Phone **03-6273-0328**

Fax **03-3292-1485**

URL **<http://www.jsdfe.org/>**

E-Mail **gakkai@jsdfe.org**

